

INSTRUCTIONS FOR USE

PrEBGLYSS™ [EHB-glihs]

(lebrikizumab)

injection, for subcutaneous use

Prefilled Pen (250 mg/2 mL)

This Instructions for Use contains information on how to inject Ebglyss.

Before you use the Ebglyss prefilled pen (Pen), read and carefully follow all the step-by-step instructions.



Important Information You Need to Know Before Injecting Ebglyss

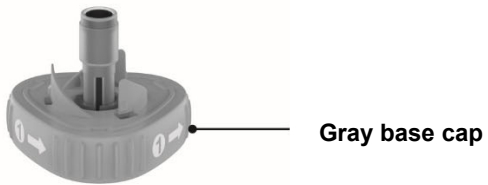
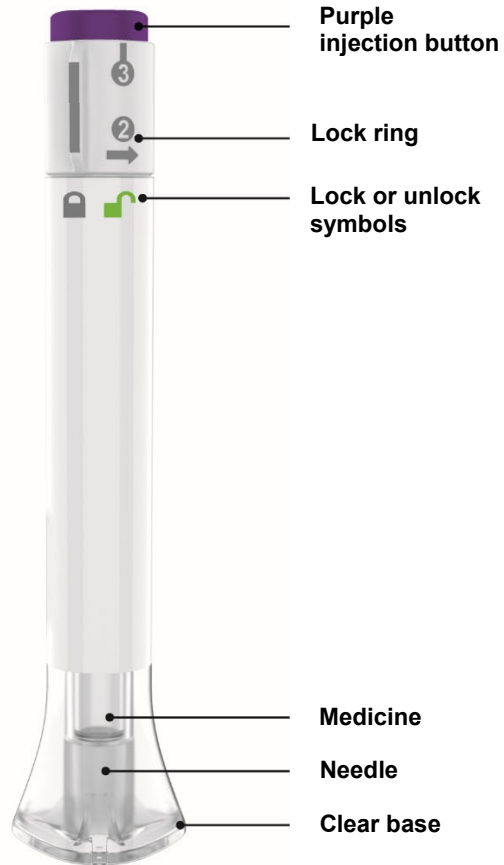
- Your healthcare professional should show you how to prepare and inject Ebglyss using the Pen. **Do not** inject yourself or someone else until you have been shown how to inject Ebglyss.
- Keep this Instructions for Use and read it as needed.
- Each Ebglyss Pen contains 1 dose (250 mg) of Ebglyss. **The Pen is for one-time use only.**
- The Ebglyss Pen contains glass parts. Handle it carefully. If you drop it on a hard surface, **do not** use it. Use a new Ebglyss Pen for your injection.
- Your healthcare professional may help you decide where on your body to inject your dose. You can also read the **Choose and Clean your injection site** section of these instructions to help you choose which area can work best for you.
- If you have vision or hearing problems, **do not** use Ebglyss Pen without help from a caregiver.
- See **Storing Ebglyss** for important storage information.

INSTRUCTIONS FOR USE

Before you use the Ebglyss Pen, read and carefully follow all the step-by-step instructions.

Parts of the Ebglyss Pen

Top



Bottom

Preparing to inject Ebglyss

Gather supplies:

- Ebglyss Pen from the refrigerator
- alcohol wipe
- cotton ball or piece of gauze
- sharps disposal container

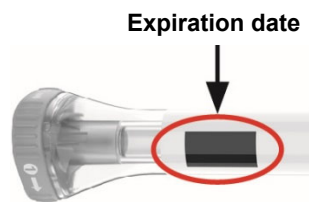
Wait 45 minutes

With the gray base cap on, allow the Pen to warm up to room temperature for 45 minutes before injecting.

- **Do not** warm up the Pen with a microwave, or hot water, or direct sunlight.
- **Do not** use the Pen if the medicine is frozen.

Inspect the Pen and the medicine

Make sure you have the right medicine. The medicine inside should be clear. It may be colorless to slightly yellow.



Do not use the Pen (see **Disposing of Ebglyss**) if the:

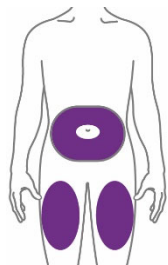
- Pen looks damaged
- medicine is cloudy, is discolored, or has particles
- expiration date printed on the label has passed

Wash your hands with soap and water

Choose and Clean your injection site

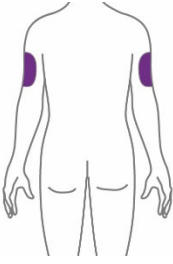
Your healthcare professional can help you choose the injection site that is best for you.

Clean the injection site with an alcohol wipe and let dry.



You or another person may inject into these areas.

- **Stomach area (abdomen) —**
At least 5 centimeters away from the belly button (navel).
- **Front of thigh —**
At least 5 centimeters above the knee and 5 centimeters below the groin.



Another person must inject into this area.

- **Back of upper arm —**

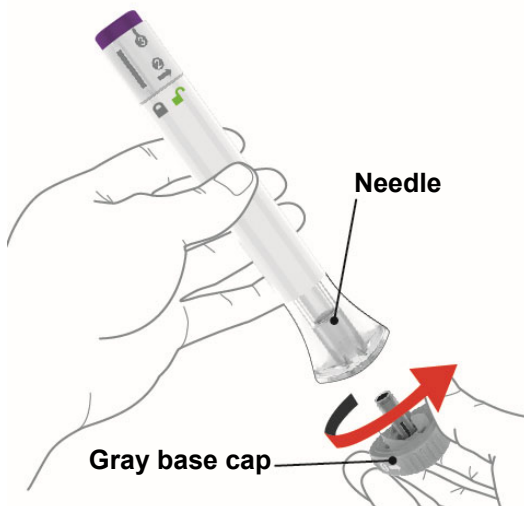
Another person must inject into the back of your upper arm.


Do not inject in the exact same spot every time.

Do not inject into areas where the skin is tender, bruised, red, hard, or in an area of skin that is affected by atopic dermatitis or other skin lesions.

Injecting Ebglyss

1 Uncap the Pen



 Make sure the Pen is **locked**.

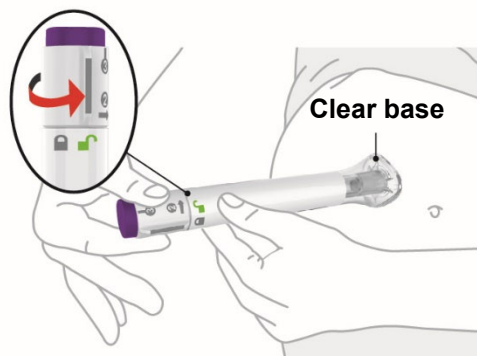


When you are ready to inject, twist off the gray base cap and throw it away in your household trash.


Do not put the gray base cap back on — this could damage the needle.

Do not touch the needle inside the clear base.

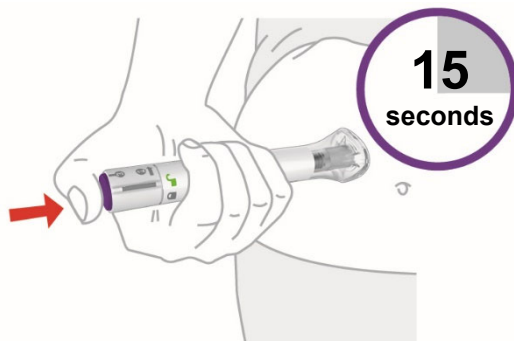
2 Place and Unlock



Place and hold the clear base flat and firmly against the skin.

 Keep the clear base on the skin, then turn the lock ring to the **unlock** position.

3 Press and Hold for 15 Seconds

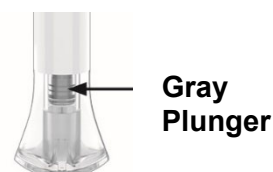


Press and Hold the purple injection button and **Listen** for two loud clicks:

- first click = injection started
- second click = injection completed

The injection may take up to 15 seconds.

You will know the injection is complete when the gray plunger is visible.



Disposing of Ebglyss

Throw away the used Pen



Put the used Ebglyss Pen in a sharps disposal container right away after use.

Do not throw away (dispose of) the Ebglyss Pen in your household trash.

If you do not have a sharps disposal container, you may use a household container that is:

- made of a heavy-duty plastic,
- can be closed with a tight-fitting, puncture-resistant lid, without sharps being able to come out,
- upright and stable during use,
- leak-resistant, and

- properly labeled to warn of hazardous waste inside the container.

When your sharps disposal container is almost full, you will need to follow your community guidelines for the right way to dispose of your sharps disposal container.

There may be provincial or local laws about how you should throw away needles and pens.

Do not recycle your used sharps disposal container.

Commonly Asked Questions

Q. What if I see bubbles in the Pen?

A. Air bubbles are normal. They will not harm you or affect your dose.

Q. What if there is a drop of liquid on the tip of the needle when I remove the gray base cap?

A. A drop of liquid on the tip of the needle is normal. This will not harm you or affect your dose.

Q. What if I unlock the Pen and press the purple injection button before twisting off the gray base cap?

A. **Do not** remove the gray base cap. Throw away (dispose of) the Pen and use a new one.

Q. Do I need to hold the purple injection button down until the injection is complete?

A. You do not need to hold the purple injection button down, but it may help you keep the Pen steady and firm against your skin.

Q. What if the needle did not retract after my injection?

A. **Do not** touch the needle or replace the gray base cap. Store the Pen in a safe place to avoid an accidental needlestick and contact Lilly at 1-888-545-5979 for instructions on how to return the Pen.

Q. What if there is a drop of liquid or blood on my skin after my injection?

A. This is normal. Press a cotton ball or gauze over the injection site. **Do not** rub the injection site.

Q. How can I tell if my injection is complete?

A. After you press the purple injection button, you will hear 2 loud clicks. The second loud click tells you that your injection is complete. You will also see the gray plunger at the top of the clear base. The injection may take up to 15 seconds.

Q. What if I remove the Pen before the second loud click or before the gray plunger stops moving?

A. You may not have received your full dose. **Do not** give another injection. Call your healthcare professional for help.

Q. What if I heard more than 2 clicks during my injection — 2 loud clicks and 1 soft one. Did I get my complete injection?

A. Some people may hear a soft click right before the second loud click. That is the normal operation of the Pen. **Do not** remove the Pen from your skin until you hear the second loud click.

If you have more questions about how to use the Ebglyss Pen:

- Call your healthcare professional
- Call 1-888-545-5972
- Visit www.lilly.ca

Storing Ebglyss

- Store your Pen in the refrigerator between 2°C to 8°C.
- Your Pen may be stored at room temperature for up to 7 days. **Do not** store above 30°C. Throw away (dispose of) Ebglyss if not used within 7 days at room temperature.
- **Do not** freeze your Pen.
- Store your Pen in the original carton to protect your Pen from light.
- **Do not** microwave your Pen, or run hot water over it, or leave it in direct sunlight.
- **Do not** shake your Pen.
- Throw away (dispose of) your Pen if any of the above conditions are not followed.
- **Keep your Pen and all medicines out of the reach and sight of children.**

Read the Patient Medication Information insert for Ebglyss inside this box to learn more about your medicine.

Eli Lilly Canada, Inc., P.O. Box 73, Toronto, Ontario, M5X 1B1

Ebglyss is a trademark owned by or licensed to Eli Lilly and Company, its subsidiaries or affiliates.

Copyright © 2024, Eli Lilly and Company. All rights reserved.

Document Issued: June 24, 2024

EBG-0001-CA-AI-IFU-20240624