

INSTRUCTIONS FOR USE

PrEBGLYSS™ [EHB-glihs]

(lebrikizumab)

injection, for subcutaneous use

Single Use Prefilled Syringe with Needle Shield

Read these Instructions for Use before you use Ebglyss and carefully follow all the step-by-step instructions.

Important information for the Ebglyss Prefilled Syringe with Needle Shield:

Do not inject yourself or someone else until you have been shown how to inject Ebglyss. Your healthcare professional should show you or your caregiver how to prepare and inject Ebglyss before you do it yourself the first time. You and your caregiver should read these Instructions for Use before you start using Ebglyss and each time you get a refill. Keep these instructions and refer to them as needed. Call your healthcare professional if you have any questions.

Each **single use** prefilled syringe with needle shield (called “Ebglyss Prefilled Syringe” in these instructions) contains 250 mg of lebrikizumab for injection under the skin (subcutaneous injection). Do not share or reuse syringes.

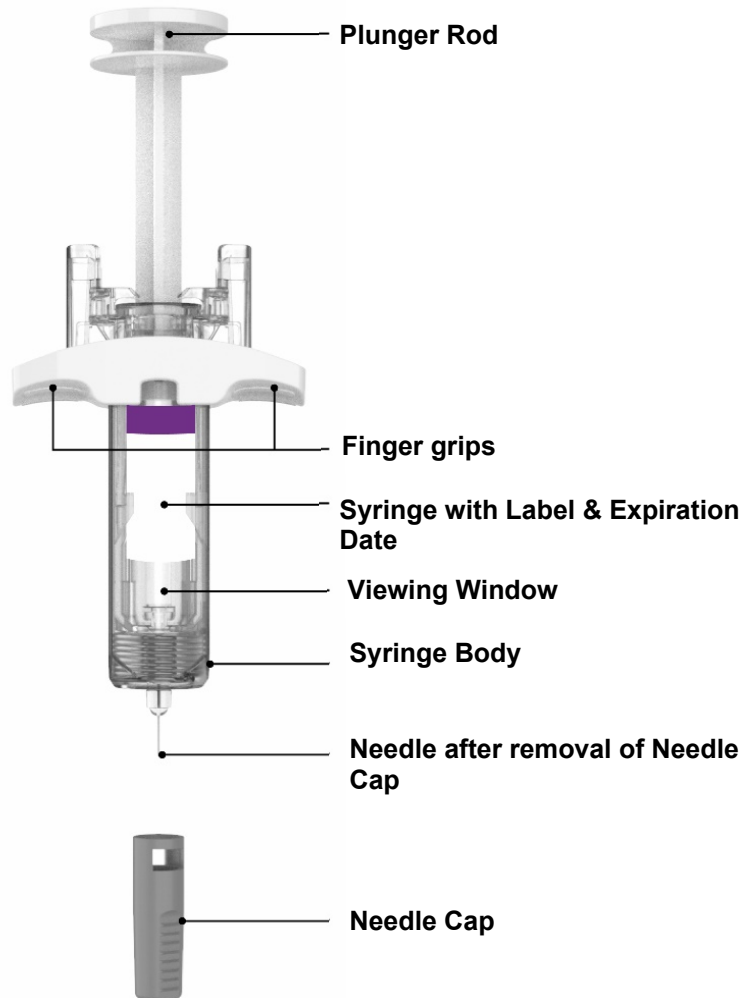
When using the Ebglyss Prefilled Syringe

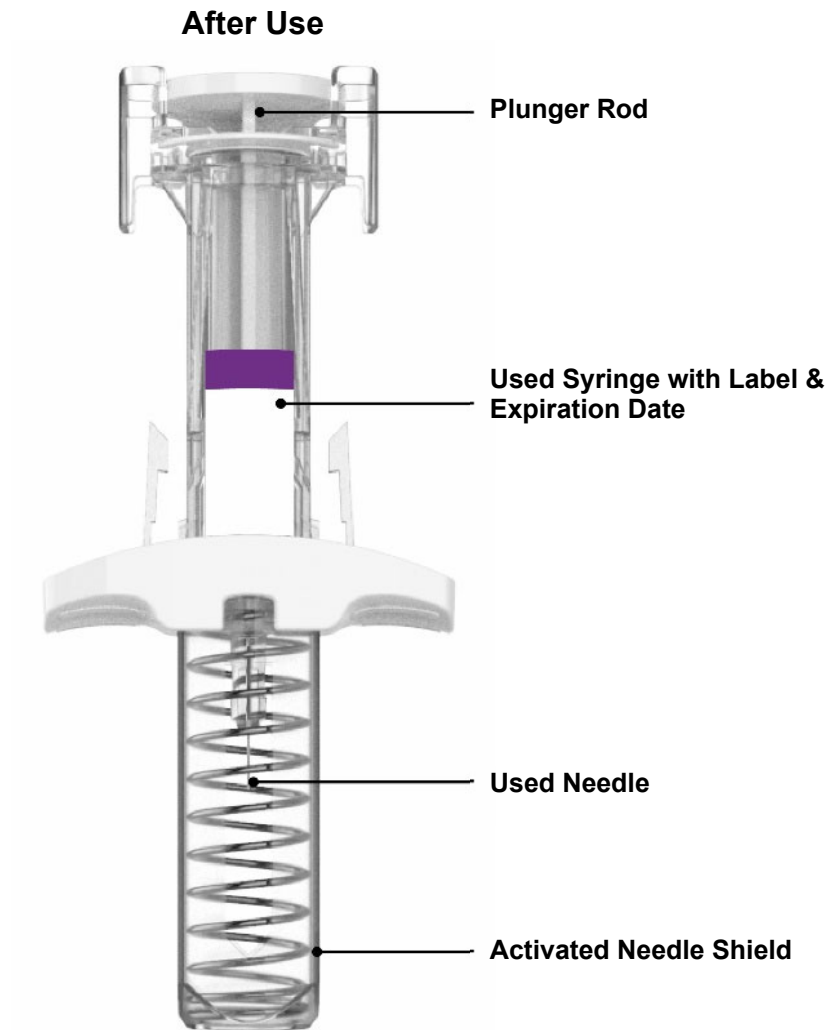
- Talk to your healthcare professional about how often you will need to inject the medicine.
- Use a different injection site each time you inject.
- If you have vision problems, do not use Ebglyss Prefilled Syringe without help from a caregiver.
- To reduce the risk of accidental needle sticks, each Prefilled Syringe has a Needle Shield that is automatically activated to cover the needle after you have given your injection.
- Throw away (dispose of) your used Ebglyss single use prefilled syringe immediately after use (see **Dispose of the Syringe Safely**).
- **Do not** use the Ebglyss Prefilled Syringe if it has been dropped on a hard surface or damaged.
- **Do not** use the Ebglyss Prefilled Syringe if the Needle Cap is missing or not securely attached.
- **Do not** touch the Plunger Rod until you are ready to inject.
- **Do not** get rid of any air bubble in the Ebglyss Prefilled Syringe.
- **Do not** pull back on the Plunger Rod at any time.
- **Do not** inject through clothes.
- **Do not** remove the Needle Cap until right before you are ready to give the injection.
- **Do not re-use an Ebglyss Single Use Prefilled Syringe.**

INSTRUCTIONS FOR USE

Read these Instructions for Use before you use Ebglyss and carefully follow all the step-by-step instructions.

Parts of the Ebglyss Prefilled Syringe with Needle Shield Before Use



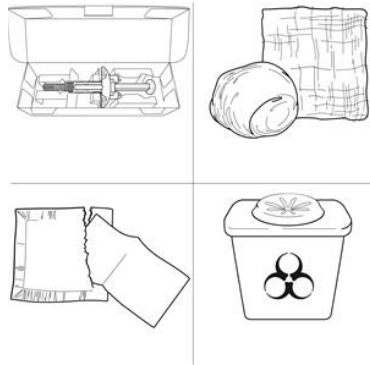


How should I store Ebglyss?

- **Keep Ebglyss Prefilled Syringes and all medicines out of the reach and sight of children.**
- Store Ebglyss in a refrigerator, at 2°C to 8°C.
- Keep Ebglyss in the original carton until ready for use to protect from light.
- Ebglyss Prefilled Syringes can be stored at room temperature up to 30°C for up to 7 days. Throw away (dispose of) any Ebglyss Prefilled Syringes that have been left at room temperature for longer than 7 days.
- **Do not** heat or freeze the Ebglyss Prefilled Syringe.
- **Do not** shake the Ebglyss Prefilled Syringe.
- **Do not** put the Ebglyss Prefilled Syringe into direct sunlight.

Preparing to inject Ebglyss

Prepare Supplies

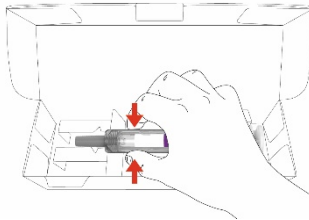


Make sure you have the following:

- 1 Ebglyss Prefilled Syringe with Needle Shield
- 1 alcohol wipe*
- 1 cotton ball or gauze*
- 1 sharps disposal container*

*Items not included with the product.

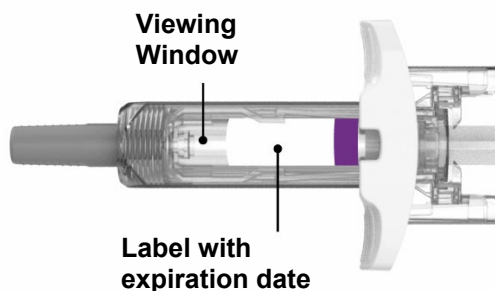
Remove Syringe from Carton



Remove the Ebglyss Prefilled Syringe from the carton by holding the middle of the Syringe Body.

Leave the Needle Cap on until you are ready to inject.

Inspect Prefilled Syringe



When you receive your Ebglyss Prefilled Syringes, **always check to see that you have the correct medicine and dose and visually inspect the syringe.**

Note: You may gently rotate the Plunger Rod to view the syringe label.

The label should read “Ebglyss”.

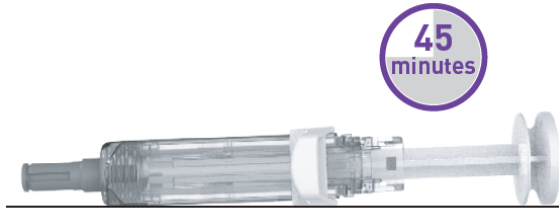
Do not use the Ebglyss Prefilled Syringe if the expiration date has passed.

Do not use the Ebglyss Prefilled Syringe if it has been damaged.

Look at the medicine through the Viewing Window on the Ebglyss Prefilled Syringe. The liquid should be clear and colorless to slightly yellow. *Note: some air bubbles are normal.*

Do not use the Ebglyss Prefilled Syringe if the liquid is discolored or cloudy, or it contains visible flakes or particles, or the syringe shows signs of damage, or the syringe has been dropped, or the medicine is frozen.

Bring to Room Temperature



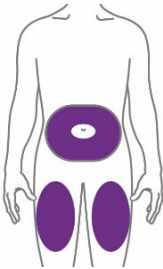
Place the Ebglyss Prefilled Syringe on a flat surface and let it warm to room temperature naturally for at least 45 minutes.

Do not heat the Ebglyss Prefilled Syringe with a microwave or hot water.

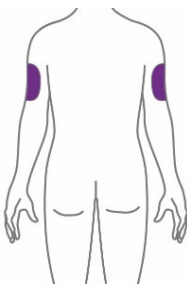
Do not put the Ebglyss Prefilled Syringe into direct sunlight.

Do not keep Ebglyss Prefilled Syringes at room temperature above 30°C for more than 7 days. Throw away (dispose of) any Ebglyss Prefilled Syringes that have been left at room temperature for longer than 7 days.

Choose Your Injection Site



You or another person may inject into these areas.



Another person must inject into this area.

- You can inject into your thigh or stomach area (abdomen), except for 5 centimeters around your belly button (navel).
- If you chose the front of your thigh, you should inject at least 5 centimeters above the knee and 5 centimeters below the groin.
- If you choose the outer area of the upper arm, you will need a caregiver to help you.
- Choose a different injection site each time you inject Ebglyss.

Do not inject into areas where the skin is tender, bruised, red, hard or in an area of skin that is affected by atopic dermatitis or other skin lesions.

Prepare Your Skin

Wash your hands thoroughly. Clean the injection site with an alcohol wipe. Let the injection site dry before injecting.

Do not touch the injection site again or blow on it before the injection.

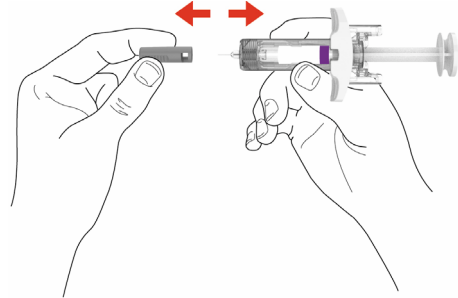
Injecting Ebglyss

- 1 Remove Needle Cap**
Hold the Ebglyss Prefilled Syringe in the middle of the Syringe Body with the Needle pointing away from you, and pull off the Needle Cap.

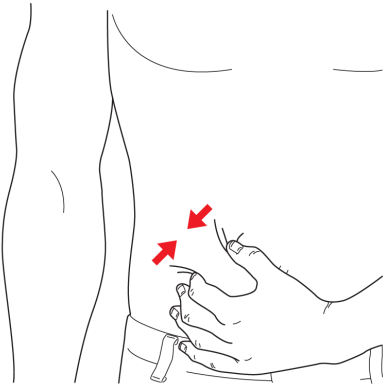
Do not put the Needle Cap back on.

Do not touch the Needle.

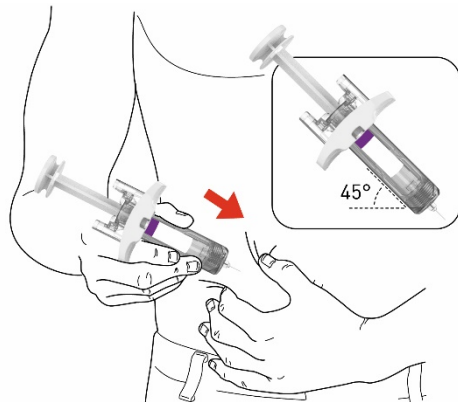
Inject your medicine immediately after removing the Needle Cap.



- 2 Pinch the Injection Site**
Gently pinch a fold of skin at the injection site (thigh or stomach, except for 5 centimeters around your belly button, or outer area of the upper arm if injected by your caregiver).



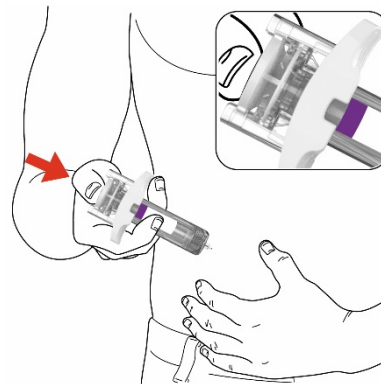
- 3 Insert the Needle**
Insert the Needle completely into the fold of skin at about a 45° angle.



4 Push in the Plunger Rod

Gently relax the pinch while keeping the needle in place. Slowly and steadily push the Plunger Rod down all the way until it stops and the syringe is empty.

Note: It is normal to feel some resistance.



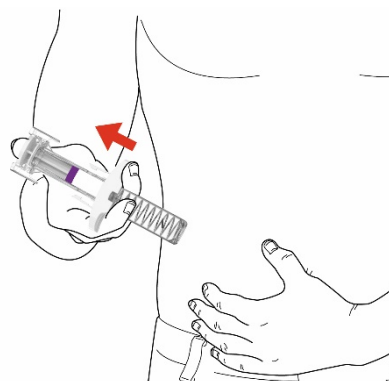
5 Release and Remove

Lift your thumb to release the Plunger Rod until the Needle is covered by the Needle Shield, and then remove the Syringe from the injection site.

Lightly press a cotton ball or gauze on the injection site if you see any blood.

Do not put the Needle Cap back on.

Do not rub your skin after injection.



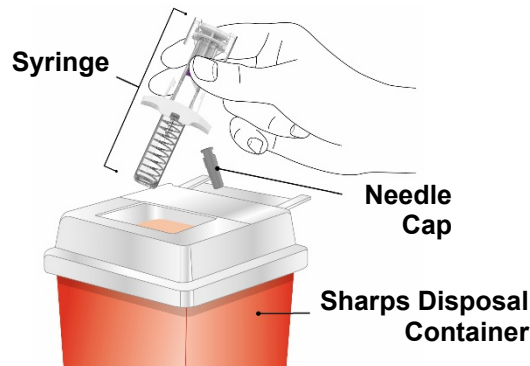
Dispose of the Syringe Safely

Put your used Ebglyss Prefilled Syringe and Needle Cap in a sharps disposal container immediately after use.

Do not dispose of (throw away) Ebglyss Prefilled Syringes and Needle Caps in your household trash.

If you do not have a sharps disposal container, you may use a household container that is:

- made of a heavy-duty plastic,
- able to be closed with a tight-fitting, puncture resistant lid to keep sharps from falling out,
- upright and stable during use,
- leak-resistant, and
- properly labeled to warn of hazardous waste inside the container



When your sharps disposal container is almost full, follow your community guidelines for the right way to dispose of it. There may be provincial or local laws regarding the disposal of used needles and syringes.

For more information about safe sharps disposal, ask your healthcare professional about options available in your area.

Do not dispose of your used sharps disposal container in your household trash unless your community guidelines permit this.

Do not recycle your used sharps disposal container.

Do not put the Needle Cap back on.

If you have more questions about how to use the Ebglyss Prefilled Syringe:

- Call your healthcare professional
- Call 1-888-545-5972
- Visit www.lilly.ca

Read the Patient Medication Information insert for Ebglyss inside this box to learn more about your medicine.

Eli Lilly Canada, Inc., P.O. Box 73, Toronto, Ontario, M5X 1B1

Ebglyss is a trademark owned by or licensed to Eli Lilly and Company, its subsidiaries or affiliates.

Copyright © 2024, Eli Lilly and Company. All rights reserved.

Document Issued: June 24, 2024

EBG-0001-CA-PFS-IFU-20240624