

INSTRUCTIONS FOR USE

How to use the TALTZ prefilled autoinjector

PrTALTZ®
(ixekizumab) injection
80 mg/mL



www.lilly.ca

Lilly

PLEASE READ THESE INSTRUCTIONS BEFORE USE

Before you use the TALTZ prefilled autoinjector, read and carefully follow all the step-by-step instructions.

BEFORE USING YOUR PREFILLED AUTOINJECTOR:

IMPORTANT POINTS TO KNOW

- Read and carefully follow all the instructions. Keep the Instructions for Use and refer to them as needed.
- The prefilled autoinjector contains 1 dose of TALTZ. The prefilled autoinjector is for ONE-TIME USE ONLY.
- The prefilled autoinjector contains glass parts. Handle it carefully. If you drop it on a hard surface, do not use it. Use a new prefilled autoinjector for your injection.
- Your healthcare professional may help you decide where on your body to inject your dose. You can also read the GET READY section of these instructions to help you choose which area can work best for you.
- Read the TALTZ Patient Medication Information inside this box to learn more about your medicine.

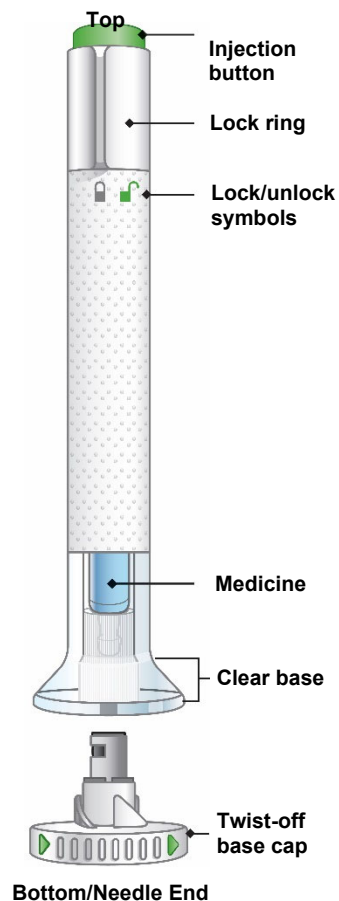
IMPORTANT SAFETY INFORMATION

- If you have questions or need help with your prefilled autoinjector, call your healthcare professional or visit the manufacturer's website at www.lilly.ca or call 1-888-545-5972.
- If you have vision problems, **DO NOT** use the prefilled autoinjector, without help from a person trained to use it.
- Keep the prefilled autoinjector out of the reach and sight of children.
- If you do not have a sharps container, ask your healthcare professional where you can get one.

INSTRUCTIONS FOR USE

Before you use the TALTZ prefilled autoinjector, read and carefully follow all the step-by-step instructions.

Guide to the parts



1 GET READY

- 1a Take the prefilled autoinjector from the refrigerator.** Leave the base cap on until you are ready to inject. **Wait 30 minutes** to let the prefilled autoinjector warm to room temperature before you use it. This will make the medicine easier to inject.

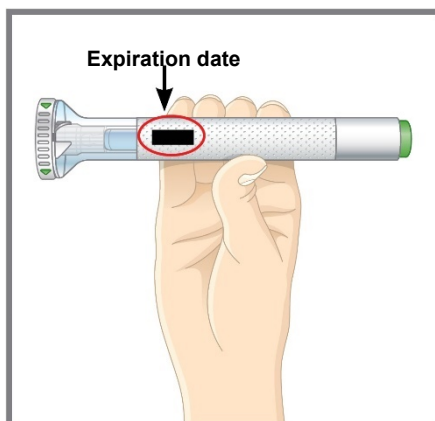


DO NOT microwave the prefilled autoinjector, run hot water over it, or leave it in direct sunlight.

1b Gather the supplies for your injection:

- 1 alcohol wipe
- 1 cotton ball or piece of gauze
- 1 sharps container for disposal of prefilled autoinjector

1c



Inspect the prefilled autoinjector. Check the label. Make sure the name TALTZ appears on the label. Also make sure the medicine has not expired.

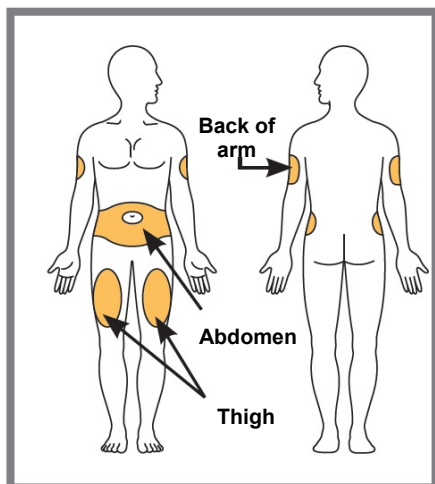
The medicine inside should be clear. Its color may vary from colorless to slightly yellow.

If you see any of the following, **DO NOT USE** the prefilled autoinjector, and dispose of it as directed:

- It is past the expiration date
- It looks damaged
- The medicine is cloudy, is distinctly brown, or has small specks

1d Wash your hands before you inject your medicine.

1e



Choose your injection site.

You may inject in your abdomen (stomach area), in your thigh, or in the back of your arm. To inject in your arm, you will need someone to help you.

DO NOT inject into areas where the skin is tender, bruised, red, scaly, or hard or where you have scars or stretch marks. **DO NOT** inject within 1 inch (2.5 centimeters) around of the navel (belly button).

Alternate your injection sites. DO NOT inject in the exact same spot every time. For

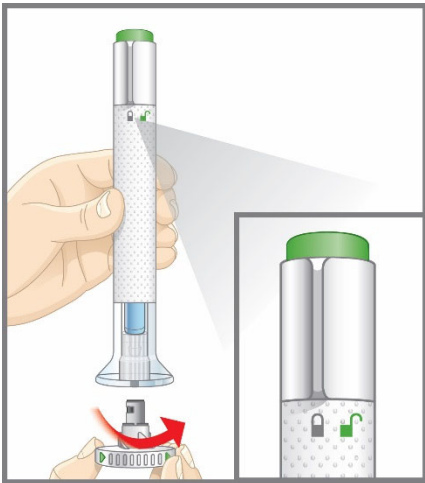
Talk with your healthcare professional about where on your body may be best to inject your dose.

example, if your last injection was in your left thigh, your next injection should be in your right thigh, your abdomen, or the back of either arm.

- 1f Prepare your skin.** Clean your skin with an alcohol wipe. Let the injection site dry before you inject your medicine.

2 INJECT

2a



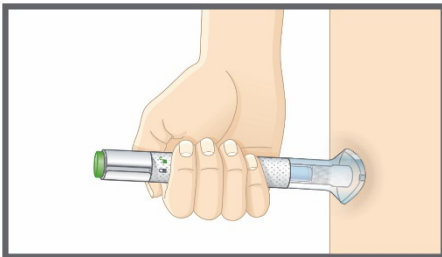
Make sure the lock ring is in the lock position.

Leave the base cap on until you are ready to inject. **DO NOT** touch the needle.

Twist off the base cap.

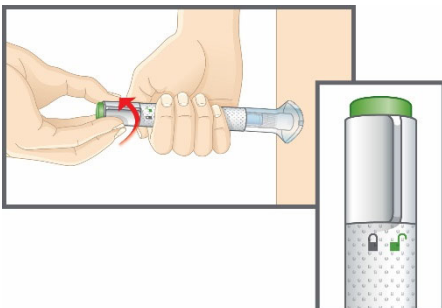
Throw the base cap in the garbage. You will not need to put the base cap back on—doing so could damage the needle or cause you to stick yourself by accident.

2b



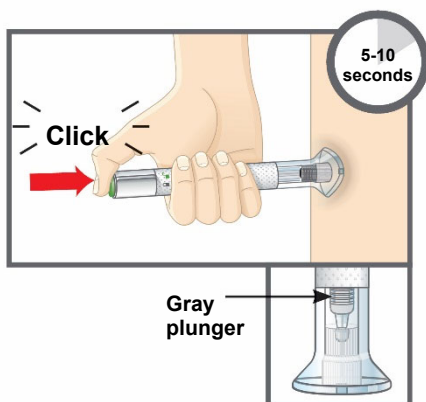
Place the clear base flat and firmly against your skin.

2c



Keep the base on your skin, and then turn the lock ring to the unlock position. You are now ready to inject.

2d



Press the green injection button. There will be a loud click.

Keep holding the clear base firmly against your skin. You will hear a second click in about 5 to 10 seconds after the first one. **The second click tells you that your injection is complete.**

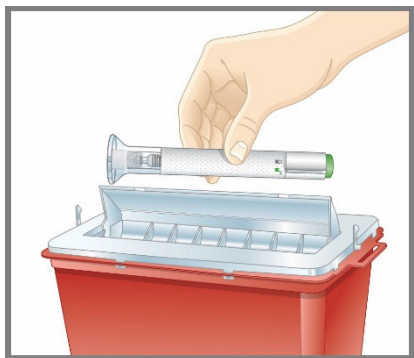
You will also see the gray plunger at the top of the clear base.

Remove the prefilled autoinjector from your skin.

Press a cotton ball or gauze over the injection site. **DO NOT** rub the injection site, as this may cause bruising. You may have slight bleeding. This is normal.

3 FINISH

3a



Dispose of the prefilled autoinjector.

DO NOT put the base cap back on. Dispose of the used prefilled autoinjector in a sharps container such as a closeable, puncture-resistant container.

When you dispose of the prefilled autoinjector and the sharps container:

- Put the prefilled autoinjector in a sharps container (like a biohazard container) or a hard plastic container with a secure lid. Do not throw the prefilled autoinjector directly into your household garbage.
- Do not recycle the filled container. The full container must be disposed of according to your provincial and local laws.
- For information on how to dispose of the container properly, ask your healthcare professional about options available in your area.

Commonly asked questions

Q. What if I see bubbles in the prefilled autoinjector?

A. It is normal to have air bubbles in the prefilled autoinjector. TALTZ is injected under the skin (subcutaneous injection). Air bubbles are not a problem in this type of injection. They will not harm you or affect your dose.

Q. What if there is a drop of liquid on the tip of the needle when I remove the base cap?

A. It is okay to see a drop of liquid on the tip of the needle. This will not harm you or affect your dose.

Q. What if I unlocked the prefilled autoinjector and pressed the green injection button before I twisted off the base cap?

A. Do not remove the base cap. Contact 1-888-545-5972.

Q. Do I need to hold the injection button down until the injection is complete?

A. This is not necessary, but it may help you keep the prefilled autoinjector steady and firm against your skin.

Q. What if the needle did not retract after my injection?

A. Do not touch the needle or replace the base cap. Store in a safe place and contact 1-888-545-5972.

Q. What if I heard more than 2 clicks during my injection—2 loud clicks and a soft one. Did I get my complete injection?

A. Some patients may hear a soft click right before the second loud click. That is the normal operation of the prefilled autoinjector. Do not remove the prefilled autoinjector from your skin until you hear the second loud click.

Q. How can I tell if my injection is complete?

A. After you press the green injection button, you will hear 2 loud clicks. The second click tells you that your injection is complete. You will also see the gray plunger at the top of the clear base.

Q. What if the prefilled autoinjector is left at room temperature for longer than 30 minutes?

A. If needed, the prefilled autoinjector may be left out of the refrigerator at room temperature up to 30°C (86°F) for up to 5 days if protected from direct sunlight. TALTZ should be discarded if not used within the 5-day period at room temperature. See “**How to store your TALTZ prefilled autoinjector**” for more detail.

For questions or more information about TALTZ

It's important to know how to inject your medicine correctly and safely. If you have questions about TALTZ prefilled autoinjector:

- Talk to your healthcare professional
- Call Lilly at 1-888-545-5972
- Visit www.lilly.ca

How to store your TALTZ prefilled autoinjector

DO



DO store the prefilled autoinjector in the refrigerator between 2°C to 8°C (36°F to 46°F) until you are ready to use it.

If needed, the prefilled autoinjector may be left out of the refrigerator at a temperature up to 30°C (86°F) for up to 5 days. TALTZ should be discarded if not used within this 5-day period.



DO wait 30 minutes to let the prefilled autoinjector warm to room temperature before you use it.

DO NOT



DO NOT freeze the prefilled autoinjector. If the prefilled autoinjector has been frozen, **do not use it**.



DO NOT microwave the prefilled autoinjector, run hot water over it, or leave it in direct sunlight.

DO NOT shake the prefilled autoinjector.

Read the Patient Medication Information for TALTZ inside this box to learn more about your medicine.

TALTZ is a registered trademark owned or licensed to Eli Lilly and Company, its subsidiaries or affiliates.

Copyright © 2016, 2021, Eli Lilly and Company. All rights reserved.

Document Revision Date: July 23, 2021

The TALTZ prefilled autoinjector meets the current dose accuracy and functional requirements of ISO 11608-1:2012 and 11608-5:2012

TAL-AI-0006-CA-IFU-20210723